

AlproJet-Series

Recommendation for use Cleaning and disinfection of dental and medical aspiration systems

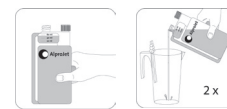
AlproJet-DD

AlproJet-DD (D = daily) is applied at 2 % and is designed for the daily alkaline cleaning, disinfection and maintenance (e.g. saliva, acids) of all dental and medical aspiration systems. AlproJet-DD should be used **twice a day (at noon and in the evening)**.



Application description for 2 litres ready for use solution:

Open the screw cap of the dosage chamber, press dosage bottle until the dosage chamber is filled up to „20 ml“ mark.



Application:

With the help of the dosage bottle, **dose 1 x 40 ml** and fill in **AlproJet MixCup with 40 - 50 °C warm water to 2 l** ready for use solution.



Attach aspiration hoses to the adapters of AlproJet MixCup, **spray mist aspiration hose to the adapter with the large opening** and the **saliva aspirator to the adapter with the small opening** of the AlproJet MixCup. Due to the different lengths of the hoses in the AlproJet MixCup the saliva aspirator gets additional 200 ml, this improves the cleaning result in the saliva aspirator.



1 litre of ready for use solution **remains in the AlproJet MixCup** afterwards. Pour the remaining solution from the AlproJet MixCup in sips into the spittoon bowl and let it take effect. Only **before starting to work rinse thoroughly with water** (both spittoon bowl and aspiration hoses) to flush subsequently dissolved residues



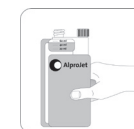
AlproJet-D

AlproJet-D 5 % is designed for the daily alkaline cleaning, disinfection, neutralizing and maintenance (e.g. saliva, acids) of all dental aspiration systems. AlproJet-D should be used **twice a day (at noon and in the evening)**.



Application:

50 ml of **AlproJet D** are needed for 1 litre of ready for use solution. Also in this case, dose **2 x 50 ml** via the **AlproJet-D dosage bottle** and **fill with 40 - 50 °C warm water up to 2 litres** of ready for use solution in the AlproJet MixCup. **For handling see AlproJet-DD.**



AlproJet-W

AlproJet-W (W = weekly) is a special solution and is used as **5 - 10 %** ready for use solution. **AlproJet-W** is used on **two days a week** as acid contra cleaning preparation **instead of AlproJet-D or AlproJet-DD**. Also in this case, the application should be carried out **twice a day (at noon and in the evening)**. **AlproJet-W** is mainly intended to **dissolve protein** and **incrustation of limescale**. Thus the blood accumulating during surgical treatment can be more easily drained from separator and centrifuge systems.



Application recommendation for special applications:

E.g. **before performing surgery aspirate 1 L of cold 5 % solution of AlproJet-W via the tubes into the system** (because of possible foam formation caused by blood and hydrogen peroxide).

Prevents deposits, neutralizes hydrogen peroxide in the collecting container and reduces foaming. **In this case AlproJet-W should be mixed with cold water.**

In case of heavy soiling resp. already coagulated blood apply a **50 - 60 °C warm AlproJet-W 10 %** solution.

Result:

The **dissolving process** is **accelerated**, **residues** become pumpable and thus **are removed more easily**.

AlproJet-Series

Further application recommendation for special applications:

Prophylaxis with air polishing devices:

Some powders based on sodium/calcium bicarbonate and various polishing agents may lead to incrustations, foam forming (tensides/emulsifiers) as well as dropouts in aspiration. These problems can be avoided by the following instructions for use.

Solution:

Aspirate a cold 10 % AlproJet-W solution (1 litre) in the aspiration system before the treatment

Result:

The foaming **residues are neutralized/eliminated** and interruptions of aspiration are prevented.



Basic cleaning with AlproJet-W:

3 – 5 L AlproJet-W 10 % application concentration. Aspirate solution, let it take effect for 1 – 2 hours and rinse with 50 °C hot water.

Result:

The **dissolving process is accelerated, residues become pumpable** and thus **are removed more easily**.

Further application recommendations:

Amalgam separator, single unit:

depending on work technique use **AlproJet-W twice a week (Monday and Tuesday)** and **AlproJet-DD/AlproJet-D three times a week (Wednesday until Friday)**.
In case of **high protein load AlproJet-W** can be used **three times a week** and **AlproJet-D/AlproJet-DD twice a week**.



Centralized amalgam separator and separation systems:

With centralized wet aspiration systems (long drain tubes) **alternate weekly** between **AlproJet-DD/AlproJet-D + AlproJet-W** and use it **twice a day**

Contact time: 30 minutes at least! (best at noon or overnight)

Only **before starting to work (in the morning or after lunch)** **rinse** aspiration hoses and spittoon bowl **thoroughly with water** (e.g. repeated activating of spittoon bowl rinsing).

Due to the excellent material compatibility, even during long contact times (e.g. weekend, holidays), the complete aspiration system will not be damaged! This is repeatedly confirmed by regular neutral studies (by Dentsply Sirona amongst others).

On request various reports and environmental impact studies are at your disposal!

Basic application recommendations:

Amalgam separator, single unit:

After each patient treatment:

Aspirate 1 – 2 mugs of cold water, activate the spittoon bowl rinsing for 30 seconds (approx. 0.5 – 1 litre)!



made
in
Germany

Safe. Clean. **ALPRO.**

ALPRO MEDICAL GMBH • Mooswiesenstraße 9 • 78112 St. Georgen • Germany
Tel.: + 49 77 25 93 92-0 • Fax: +49 77 25 93 92-91 • www.alpro-medical.com • info@alpro-medical.de

ALPRO[®]
ALPRO MEDICAL GMBH